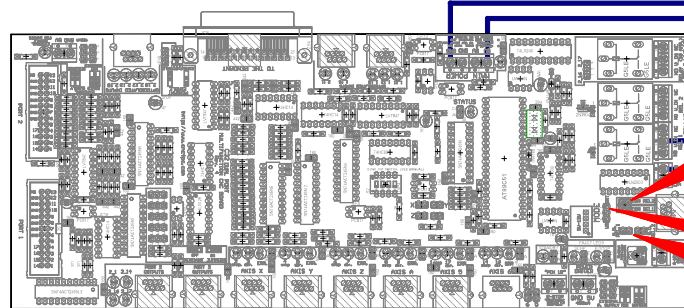


# C32R4 and MINARIK MM23000



SPEED DRIVE TERMINAL	SPEED DRIVE FUNCTION	RJ45 CABLE T-568B COLOR / PIN #	C32 FUNCTION
		BLUE-WHITE / 5	EXT. GND
		BLUE / 4	REL1 N.O.
S2	0-10VDC Analog Input	ORANGE / 2	Analog Output
S1	Common for analog signal	ORANGE-WHITE / 1	Analog GND



- Make sure the grounds of the analog circuit are kept isolated from the logic (+5vdc). Use a multimeter to confirm there is no continuity between the two grounds before applying power.
- Please consult the inverter manual and confirm this wiring works for your unit.

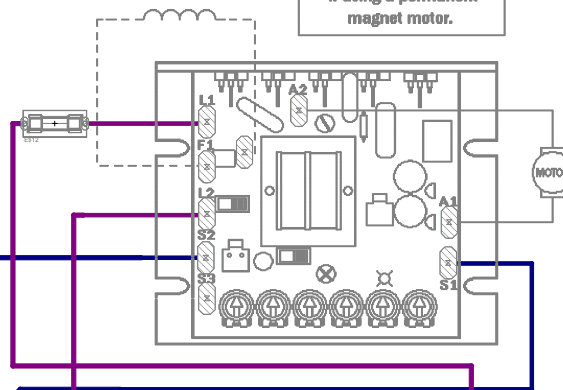
**Note:**  
 This wiring is just to illustrate a sample product application.  
 Specific wiring may vary from system to system.  
 It is the user's responsibility to implement it correctly.

US MODE					
C32 PIN	RELAYS	RELAYS		SPINDLE OPERATION	
1_14	1_16	REL. 1	REL. 2		
PWM	ON	OFF	ON	Spindle ON CCW	
PWM	OFF	ON	OFF	Spindle ON CW	
OFF	ON	OFF	OFF	Spindle OFF	
OFF	OFF	OFF	OFF	Spindle OFF	

INT MODE					
C32 PIN	RELAYS	RELAYS		SPINDLE OPERATION	
1_14	1_16	REL. 1	REL. 2		
PWM	ON	ON	ON	Spindle ON CCW	
PWM	OFF	ON	OFF	Spindle ON CW	
OFF	ON	OFF	OFF	Spindle OFF	
OFF	OFF	OFF	OFF	Spindle OFF	

FIELD COILS

**NOTE:**  
 Do not connect field coils  
 if using a permanent  
 magnet motor.



Neutral  
 Live  
 AC LINE VOLTAGE  
 120/240 VAC

**CNC4PC**  
<http://www.cnc4pc.com>

Designed: VGG	Date: AUG-27-2012
Revised:	Date: AUG-27-2012
Item: C32R4 and Minarik	Ver.: 1
Description: C32R4 and Minarik MM23000 Series	