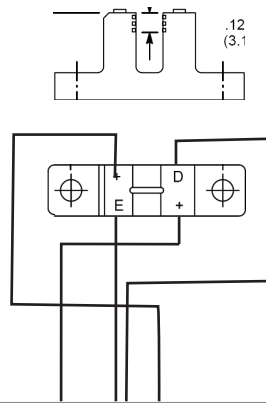


INDEX PULSE BOARD WIRING GUIDE C3 REV5.1

Cable Colors
A = RED
K/E = Bare (GND)
E = White

A=Anode, K=Cathode=Collector, E=Emitter



E = Emitter
D = Detector

External Power:
The board requires an external +5vdc power supply to operate.

OUTPUT:
The output signal comes through this terminal.

