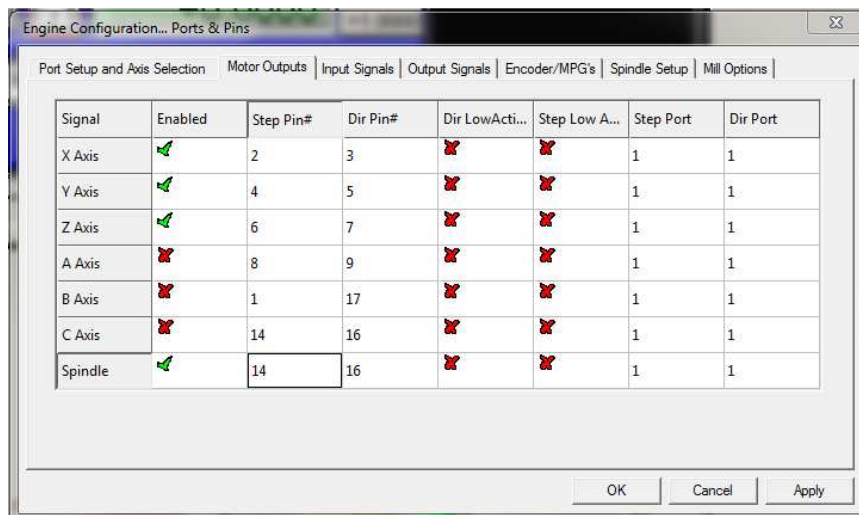

CNC⁴PC

Integration Solutions for CNC Projects

CONFIGURATION OF CONTROL SOFTWARE:

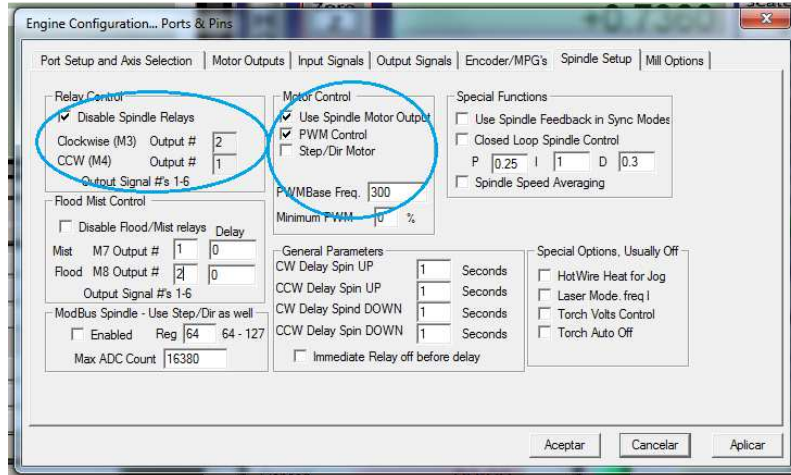
For configuring Mach X follow these steps:

Go to Config / Ports&Pins / Motor Outputs. Enable the spindle and select the port and pins you wired for step and direction.

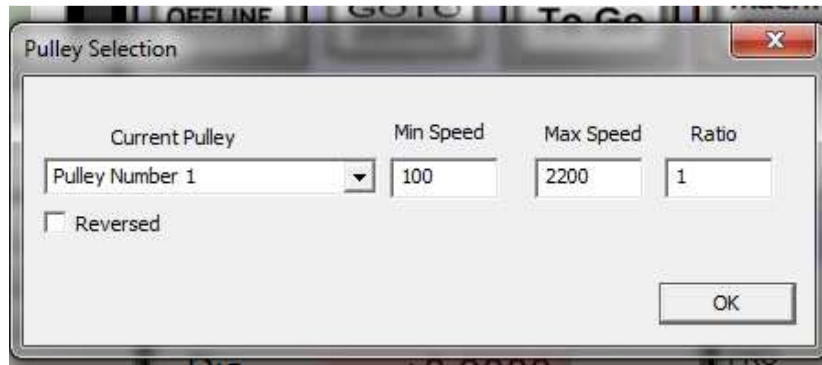


Ports&Pins configuration screenshot

Go to Config / Ports&Pins / Spindle Setup. In the motor control box, check Use Spindle Motor Output and PWM Control with a frequency of 300Hz. If using an external motion controller, like the Smooth Stepper, this needs to be configured in the plugin too.

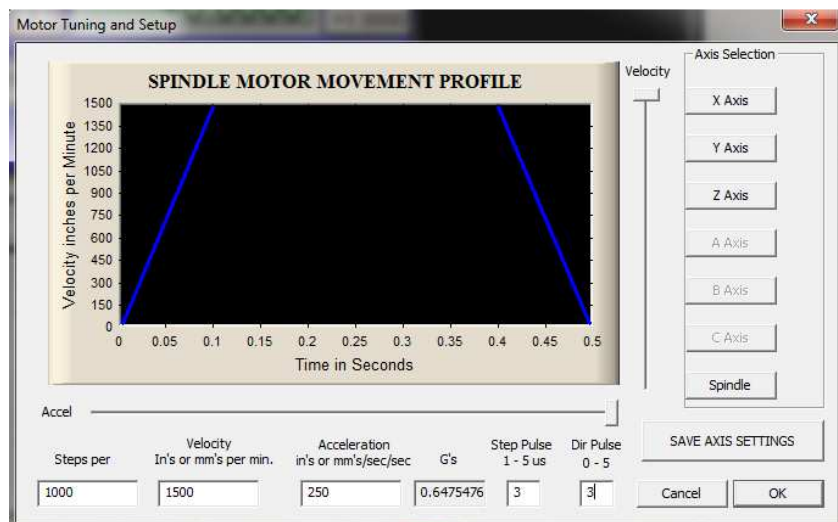


Under Pulley Ratios set the pulley ratios of the machine.



Spindle Setup screenshot

Go to Config / Motor Tuning / Spindle. Set the velocity and acceleration to the max.



Motor Tuning and Setup screenshot